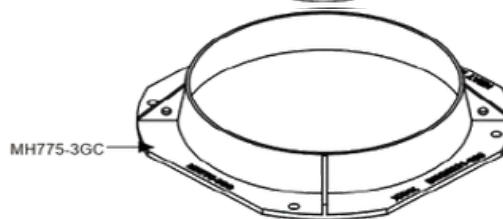
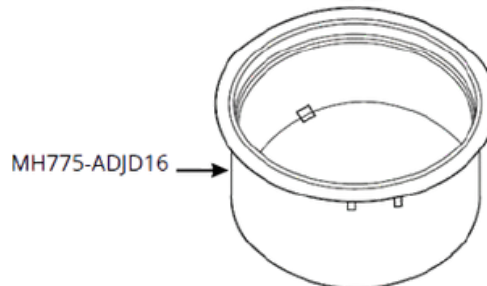
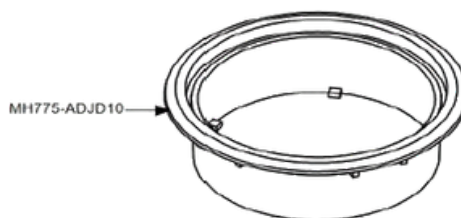
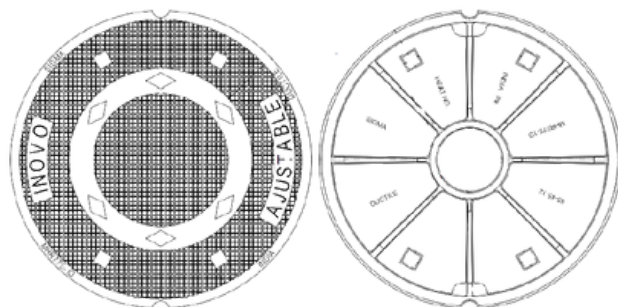
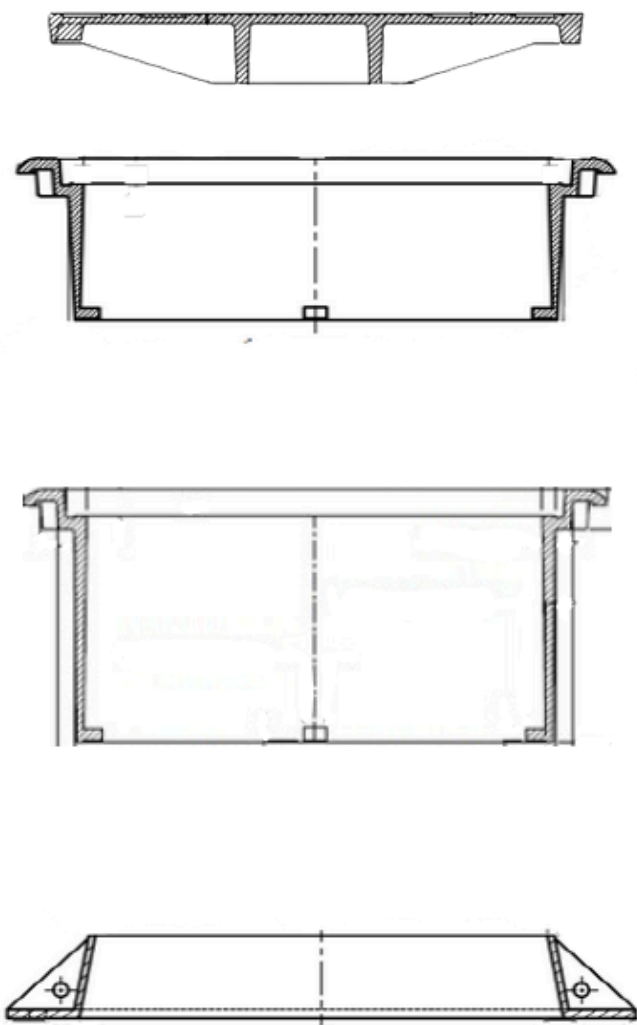


# ENSEMBLE REGARD 775 MM (30½) SANS PATTES

FICHE  
TECHNIQUE



| # PRODUIT            | DESCRIPTION   | MATÉRIEL      | POIDS  |
|----------------------|---|---------------|--------|
| MHR775-1D/1SAND/1PLD | COUVERCLE SANS PATTES 775MM (30½)<br>SANS INSCRIPTION / SANITAIRE / PLUVIAL | FONTE DUCTILE | 83 KG  |
| MH775-ADJD10         | CADRE AJUSTABLE 775MM (30½) X 250MM (10)                                    | FONTE DUCTILE | 96 KG  |
| MH775-ADJD16         | CADRE AJUSTABLE 775MM (30½) X 400MM (16)                                    | FONTE DUCTILE | 138 KG |
| MH775-3GC            | CADRE GUIDEUR CONIQUE 775MM (30½) X 150MM (6)                               | FONTE GRISE   | 65 KG  |

| CONFORMITÉS | CLASSE 65-45-12 DU DOCUMENT ASTM A536 (FONTE DUCTILE) |
|-------------|---|
|             | CLASSE 30 DU DOCUMENT ASTM A48/AA48M (FONTE GRISE)    |
|             | CERTIFICATION BNQ 3221-500 / 2017                     |

**DATE DE RÉVISION** 2022-02-23

REPRÉSENTÉ PAR [www.repco](http://www.repco)

ADRESSE 51 rue Gingras, Warwick QC J0A 1M0